

## HUBER

# Grit Trap GritWolf®

Grit trap with integrated lamella separator

- ▶ High separation efficiency of up to 75 µm
- ▶ Small footprint
- ▶ Integrated floating material separation
- ▶ Ideal for high grit loads

More information,  
downloads and  
current news



## Design and function

The new HUBER Grit Trap GritWolf® is different from space-consuming aerated grit channels as it consists of an aerated and an unaerated grit trap chamber. In the first smaller chamber the wastewater is exposed to medium-bubble aeration. Floatable particles rise to the water surface where they accumulate and are removed by a paddle system just before the outlet. The second chamber is unaerated and equipped with lamella units. Due to the deep flow approach and the advantages of a lamella separator, the GritWolf® reliably removes even very fine grit.

The grit trap tank is usually made of concrete, stainless steel tanks are however available as an option for smaller plant sizes. The GritWolf® can also be integrated into existing grit trap chambers. The horizontal grit conveyor, the lamella packages and the paddle system for grease removal are manufactured from corrosion-resistant material.

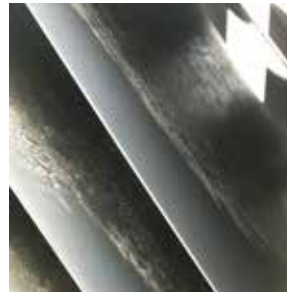
The grit is removed axially from the HUBER Grit Trap GritWolf® by a time-controlled horizontal screw conveyor. Even large 'sand dunes' occurring under stormwater conditions (stormwater flushes) are therefore evenly dosed into the suction area of a grit pump. The grit pump delivers the grit-water mix into a HUBER Coanda Grit Washer RoSF4 that produces clean grit in a proven way, thus perfecting the entire grit treatment system.

## Applications

- ▶ New wastewater treatment plants
- ▶ Grit trap refurbishment
- ▶ Pre-treatment for membrane bioreactors (MBRs)

## The user's benefits

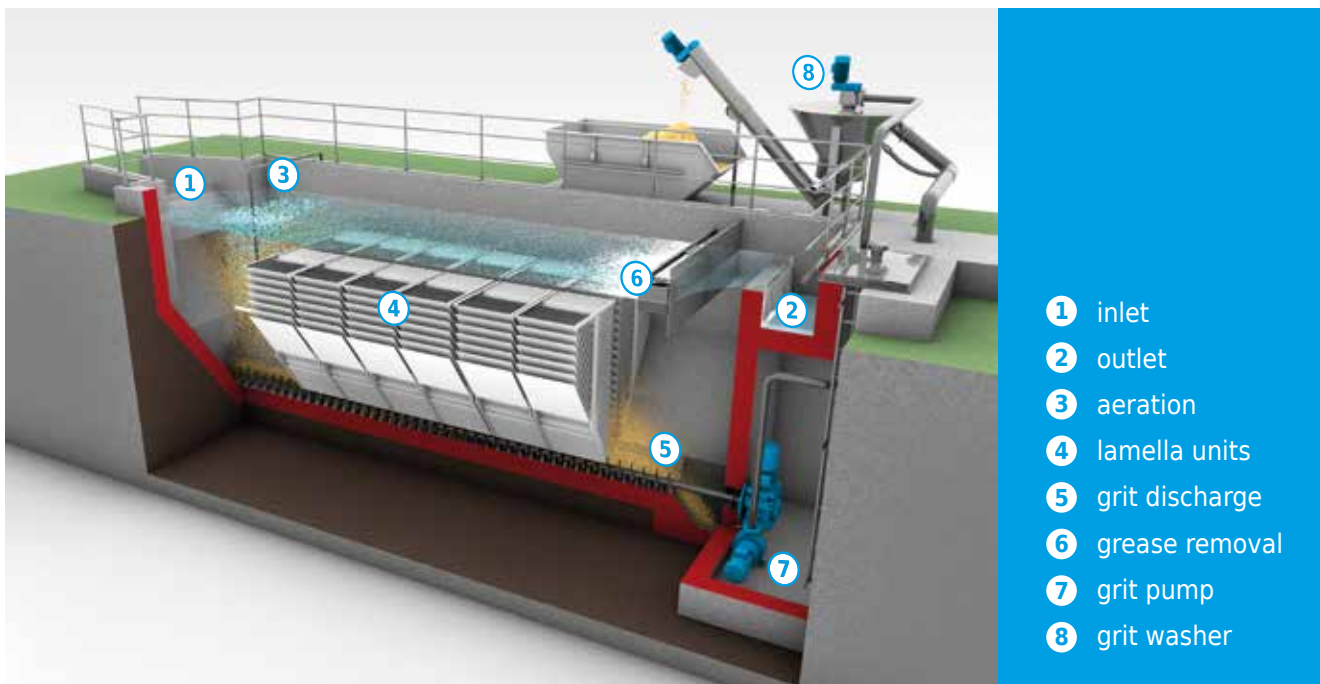
- ▶ 95 % separation of particles size  $\geq 75 \mu\text{m}$
- ▶ Small footprint and space-saving compact design
- ▶ Low pressure loss
- ▶ Regulated supply of grit to the grit pump by horizontal screw conveyor
- ▶ Floating material separation with automatic forced removal (option)
- ▶ < 3% loss on ignition with downstream grit washing



Grit retained on the lamellae.



Lamella unit installed in the HUBER Grit Trap GritWolf®.



- 1 inlet
- 2 outlet
- 3 aeration
- 4 lamella units
- 5 grit discharge
- 6 grease removal
- 7 grit pump
- 8 grit washer

## HUBER SE

Industriepark Erasbach A1 | 92334 Berching  
Phone: +49 8462 201-0 | info@huber.de  
[www.huber.de](http://www.huber.de)

HUBER Grit Trap GritWolf®

Subject to technical modification | 0,1 / 3 – 4.2022 – 4.2018