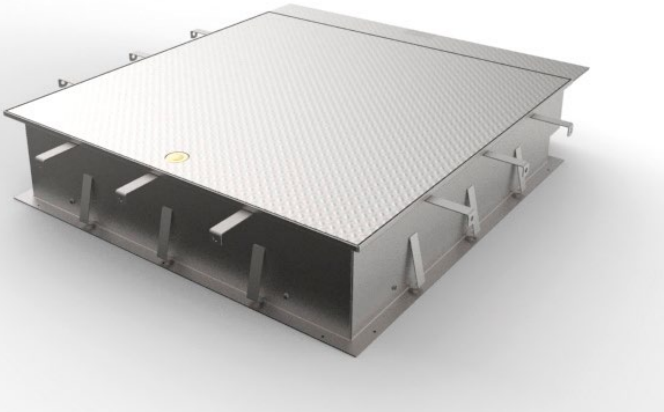


## Manhole cover SD7, for flush fitting, load bearing, attack-proof / security tested, weather-proof, rectangular type



The figure shown here may contain special accessories.

**Manhole cover**, installed flush with the surface for pedestrian and/or vehicle traffic, optionally in class A15, B125, D400, E600, weatherproof, odour-tight against pressureless water, attack-proof, rectangular in shape, made of 1.4307 (AISI 304 L) stainless steel.

Secure to prevent forced access, certified to resistance class RC3 according to DIN EN 1627 in class D400, meeting the requirements of DVGW W 1050 - Object protection for water supply structures. Suitable for use in Ex zone 1.

Not suitable for big-volume traffic.

### Designed for a clear width up to and including 1000 mm and certified to:

- ▶ DIN 1229 / DIN EN 124-1:2015-09 and DIN EN 124-3:2015-09, classes A15, B125, D400, E600 with test certificate and external monitoring.

### Designed for a clear width bigger than 1000 mm and statically calculated according to:

- ▶ DIN EN 1991:2010-12 (Eurocode 1) and DIN EN 1993:2010-12 (Eurocode 3), class EC10 (comparable with class A) and EC100 (comparable with class D).

The cover consists of a stainless steel tear pattern plate, with additional bracing on the bottom according to the weight (load class), slip resistance in accordance with DIN EN 124-1:2015-09, with a low-wear seal on the cover bottom side, screw lock, including lock system with antidrilling protection, as standard with hardened safety lock as recommended by criminal investigation

departments and in accordance with the normative standards; the profile cylinder in accordance with DIN 18252 to be provided by the customer. Frost-proof inner hinges, help for opening in the form of stainless steel gas assisted spring dampers with integrated cover arrestor which can only be undone by hand.

A connection for potential equalisation is provided.

**Easy-to-install encasing frame**, standard height 250 mm, with external wall clamps, provided for embedding in concrete (concrete up to upper frame edge) and for fixing to the casing.

Manhole cover and frame shielded arc-welded, acid-treated in a pickling bath and passivated.

Operating key included.

### Options:

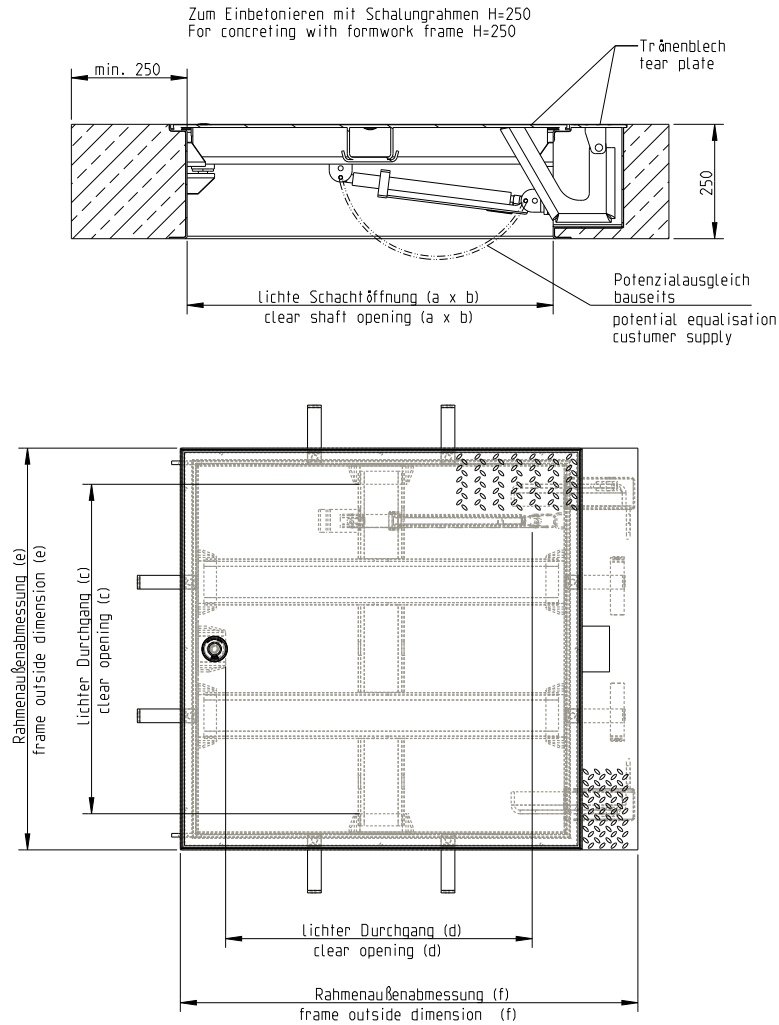
- ▶ 1.4404 (AISI 316 L) stainless steel
- ▶ Lift-off cover (without spring dampers and hinges)
- ▶ Non-standard sizes
- ▶ Encasing frame, non-standard installation height
- ▶ Designed for dowelling (only possible for class A15)
- ▶ Possibility to open the cover from below, the traffic situation to be taken into account
- ▶ Suitable for big-volume traffic up to a maximum surface of 1 m<sup>2</sup> and maximum side length of 1400 mm (no emergency exit possible). For our definition of "big-volume traffic", please refer to [www.huber.de](http://www.huber.de).
- ▶ Magnetic contact
- ▶ Cover insulation
- ▶ One-part covers watertight up to 5m WC (class D400 and EC100 only)
- ▶ One-part covers back-water proof up to 5m WC (class D400 only)
- ▶ Cover designed as a shell suitable to be filled with mastic asphalt
- ▶ Safety guard / barrier
- ▶ Safety guard / antifall guard
- ▶ Multi-part cover



Manhole cover SD7, for flush fitting, load bearing, attack-proof / security tested, weather-proof, rectangular type

Subject to technical modification | Drawing no. 50947805, 7.2024

HUBER SE | Industriepark Erasbach A1 | D-92334 Berching | Telefon: +49 8462 201-0 | [info@huber.de](mailto:info@huber.de) | [www.huber.de](http://www.huber.de)



Model	Size a x b	Order no.	Inside pass c x d	Frame outside dimensions e x f
Class A: 15 kN / 1.5 t (1)	800 x 800	ED 288/15-G	800 x 640	878 x 1000
Class A: 15 kN / 1.5 t (1)	1000 x 1000	ED 211/15-G	1000 x 840	1078 x 1200
Class B: 125 kN / 12.5 t (2)	800 x 800	ED 288/125-G	720 x 640	878 x 1000
Class B: 125 kN / 12.5 t (2)	1000 x 1000	ED 211/125-G	920 x 840	1078 x 1200
Class D: 400 kN / 40 t (3)	800 x 800	ED 288/400-G	800 x 640	878 x 1000
Class D: 400 kN / 40 t (3)	1000 x 1000	ED 211/400-G	1000 x 840	1078 x 1200
Class D: 400 kN / 40 t (3)	1200 x 800	ED 2812/400-G	1080 x 660	1278 x 1000
Class E: 600 kN / 60 t (4)	800 x 800	ED 288/600-G	720 x 640	878 x 1000
Class E: 600 kN / 60 t (4)	1000 x 1000	ED 211/600-G	920 x 840	1078 x 1200

**Ask for further dimensions. All measurements in mm.**

- (1) For green areas and areas that are no roadways but pedestrian-bearing.
- (2) For walkways and similar areas and for car parks.
- (3) For roadways, parking areas and paved traffic areas, but not suitable for big volume traffic.
- (4) For surfaces that are driven over with high wheel loads, such as docks.



Manhole cover SD7, for flush fitting, load bearing, attack-proof / security tested, weather-proof, rectangular type

Subject to technical modification | Drawing no. 50947805, 7.2024