

Data Request Sheet for Antifall Guard (ASG) for Manhole Cover SD7.1

Project:

Customer:

Customer no.:

Person in charge:

Phone:

E-mail:

☐ Offer Offer No.:

Unit price €,

☐ Order Order No.:

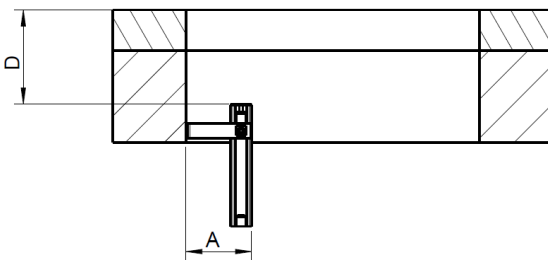
Manufacturing costs per unit €, Item: _____, Q: **P** _____

1 Material:

☐ 1.4301/1.4307

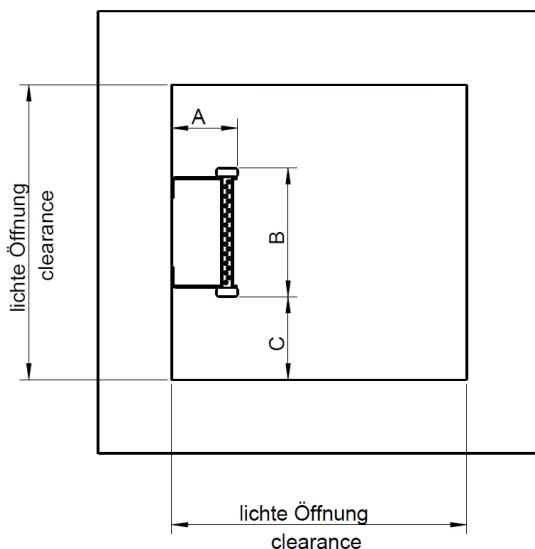
☐ 1.4571/1.4404

2. Structural dimensions:



Top of channel – upper edge of the rung "D" = mm

2.1 Square opening



☐ Clear manhole opening = x mm

Distance wall – leading ladder edge "A" = mm

Overall dimension of the ladder "B" = mm

Distance wall – ladder "C" = mm

Please indicate the hinged side of the cover in the drawing.

If other fixtures are present, such as pipelines or slide valve rods, these must also be indicated in the drawing with their dimensions. Indicate also the distance to the upper edge of the manhole.

2.2. Rectangular opening

☐ Clear manhole opening = x mm

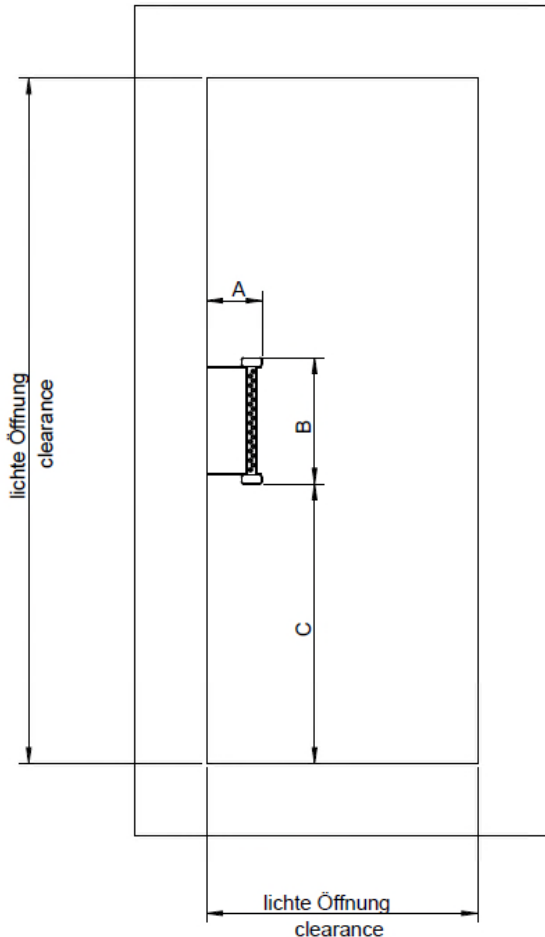
Distance wall – leading ladder edge "A" = mm

Overall dimension of the ladder "B" = mm

Distance wall – ladder "C" = mm

Please indicate the hinged side of the cover in the drawing.

If other fixtures are present, such as pipelines or slide valve rods, these must also be indicated in the drawing with their dimensions. Indicate also the distance to the upper edge of the manhole.



3. Special design:

☐ Lockable with a padlock

☐

4. Customer's confirmation:

Customer's representative: _____

Date: _____

Signature: _____

5. Sales person in charge:

Review: Reviewed at HUBER SE by: _____

6. Enclosures for the design engineers:

☐ Drawing ☐ Photo