

## Data Request Sheet for Louvre TT2.JW

Project: \_\_\_\_\_

Customer: \_\_\_\_\_ Customer no.: \_\_\_\_\_

Person in charge: \_\_\_\_\_ Phone: \_\_\_\_\_ E-mail: \_\_\_\_\_

☐ Offer Offer No.: \_\_\_\_\_ Unit price \_\_\_\_\_ €,

☐ Order Order No.: \_\_\_\_\_ Manufacturing costs per unit \_\_\_\_\_ €, Item: \_\_\_\_\_, Q: **P** \_\_\_\_\_

### 1 Clear wall opening:

Width (W) = \_\_\_\_\_ mm

Height (H) = \_\_\_\_\_ mm

(Minimum width: 100mm, RRE 200mm, configurable minimum width: 170mm, maximum width 2900mm)

(Minimum height: 170mm, maximum height: 2500mm)

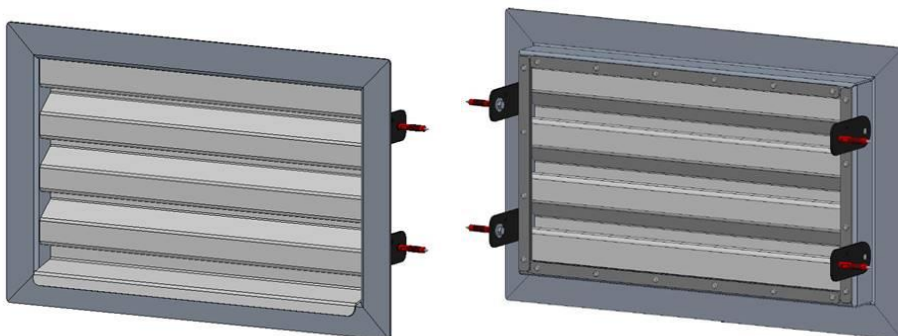
### 2. Material:

☐ 1.4307 (AISI 304 L)

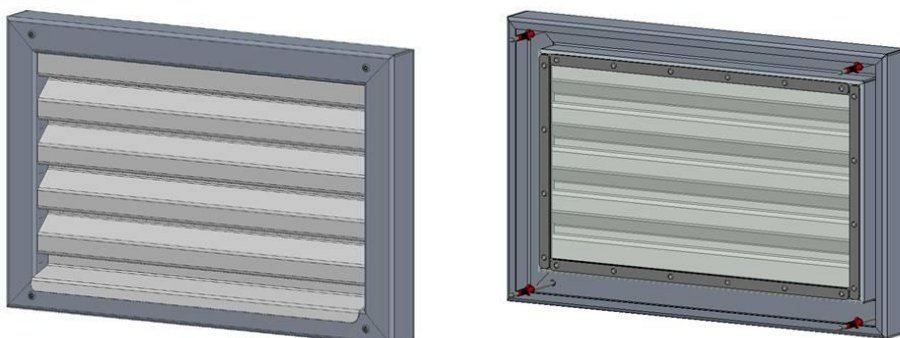
☐ 1.4404 (AISI 316 L)

### 3. Frame designs:

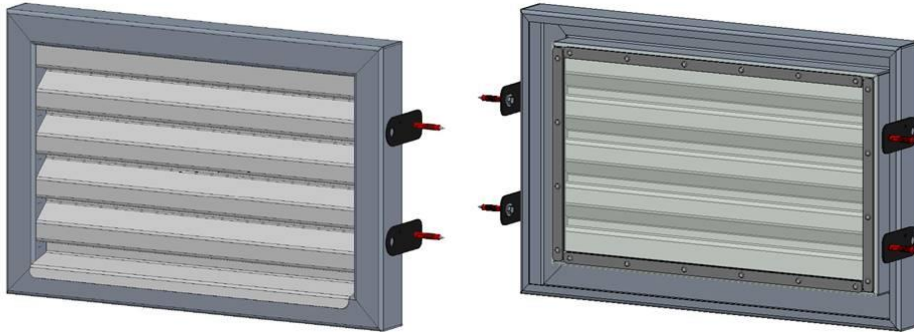
☐ 1. Z-frame with dowelling clips



☐ 2. Rectangular pipe frame for fixing onto the wall and bolted fixing on the outside (RRA)



- ☐ 3. Rectangular pipe frame fitted into the soffit, fixed in the soffit with dowelling clips (RRE)



**4. Optional equipment:**

- ☐ Without mounting bores
- ☐ Extra-long dowelling clips, distance from wall edge to dowel drill \_\_\_\_\_ mm
- ☐ Pollen filter (PF)
- ☐ Wall lining made of stainless steel, length (louvre stop to lining end) \_\_\_\_\_ mm
- ☐ Pipe socket (only available for frame design 2)  
Pipe outside diameter: \_\_\_\_\_ mm, pipe length: \_\_\_\_\_ mm
- ☐ Removable insect screen
- ☐ Machine ground surface finish
- ☐ Fixing material
- ☐ Outside painted, RAL colour: .....

**5. Special design:**

.....

**6. Sales person in charge:**

..... Phone-No. +498462/201-\_\_\_\_ Fax-No. +498462/201-399 e-Mail:\_\_\_\_@huber.de

**7. Enclosures for the design engineers:**

- ☐ Drawing
- ☐ Photo
- ☐ Offer
- ☐ .....