

Flood-proof Single Exterior Door TT6

Access door especially for areas at risk of flooding.



The figure shown here may contain special accessories.

Exterior door, flood proof up to a water gauge of 2 m, opening to the outside (pressure side), ready for installation, single-leaf, double skinned, completely made from 1.4307 stainless steel (AISI 304 L). The door and the frame closing flush.

Door leaf, Sheet thickness 3 mm on both the pressurised and non-pressurised side. Door leaf thickness: 57 mm, with injected CFCs-free polyurethane hard foam insulation, longitudinally ground surface finish, with special seal on all four sides. Attached to the frame with stable, maintenance-free hinge plates. Lock prepared for an on-site profile half cylinder lockable from the outside. It is locked by means of a locking lever that can be operated from both sides.

Frame made of special profile, all-round on four sides, with injected CFCs-free polyurethane hard foam insulation, with associated fixing material. The circumferential gap between the frame and the wall must be sealed with the sealing material supplied.

Door leaf and frame welded under inert gas, pickled in an immersion bath and passivated.

Max. permitted leakage rate: 0.3 litres/hour

Ordering options:

Frame mounting:

- ▶ Bolted with dowelling clips
- ▶ Bolted through the frame

Door opening options:

- ▶ Hinges on left
- ▶ Hinges on right

Options:

- ▶ 1.4404 (AISI 316 L) stainless steel
- ▶ Anchor hooks on the door leaf, which engage positively in the frame when closed.
- ▶ Upper door closer lockable in position
- ▶ Surface finish (painted with or without anti-graffiti finish)
- ▶ Magnetic contact: „Door open“ or „Door closed“ status display
- ▶ Lock-bolt contact: „Bolt open“ or „Bolt closed“ status display
- ▶ Potential equalisation on frame
- ▶ Steel sheet finish for exterior door surface for installations exposed to sunlight

Note:

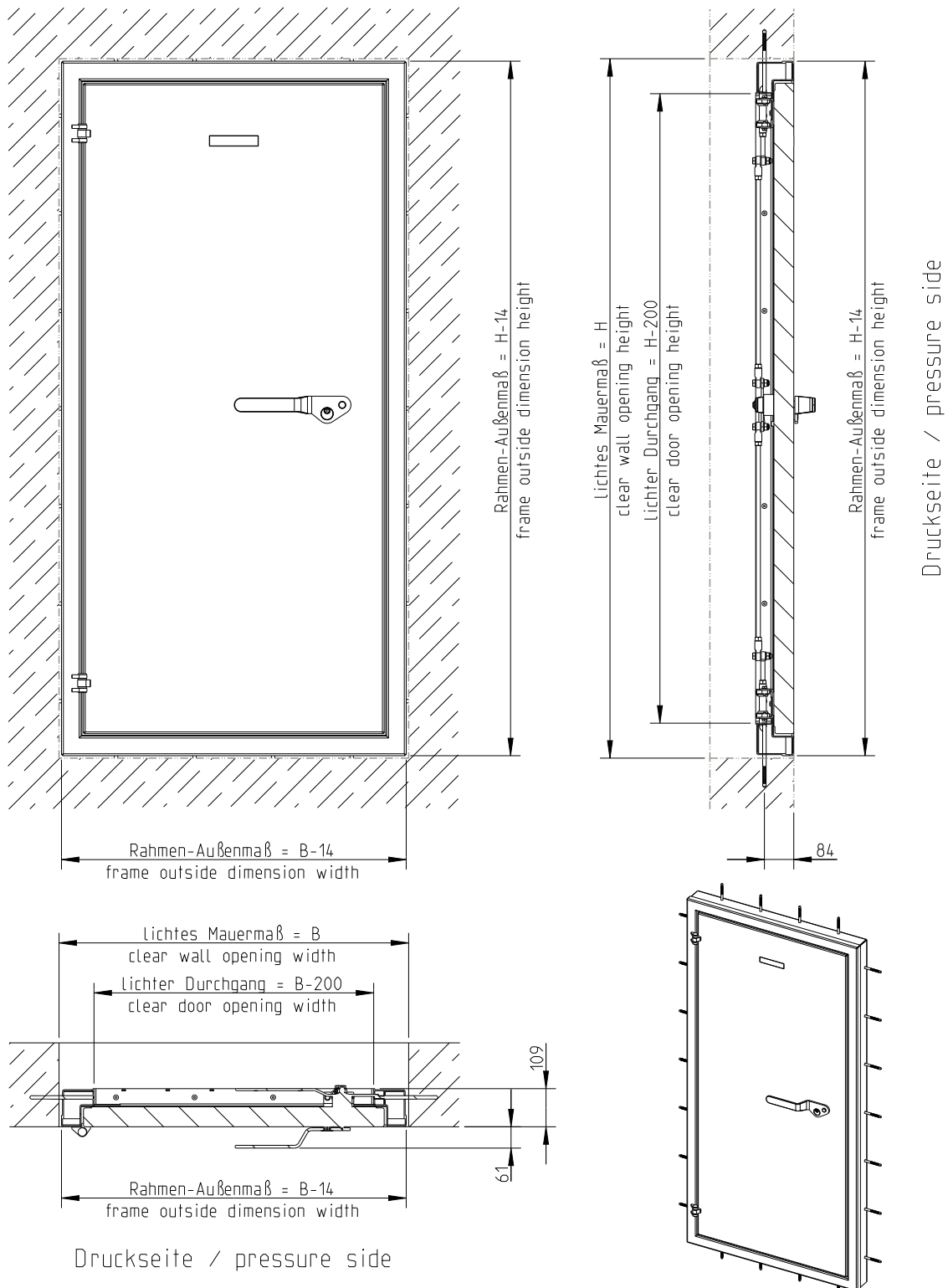
If the door is exposed to sunlight, the operability may be affected. We recommend attaching a sheet metal cover to the outside of the door.



Flood-proof Single Exterior Door TT6

Subject to technical modification | Drawing no. 190.167, 7.2024

HUBER SE | Industriepark Erasbach A1 | D-92334 Berching | Telefon: + 49 8462 201-0 | info@huber.de | www.huber.de



We always manufacture door dimensions according to your specifications.



Flood-proof Single Exterior Door TT6

Subject to technical modification | Drawing no. 190.167, 7.2024

HUBER SE | Industriepark Erasbach A1 | D-92334 Berching | Telefon: +49 8462 201-0 | info@huber.de | www.huber.de